
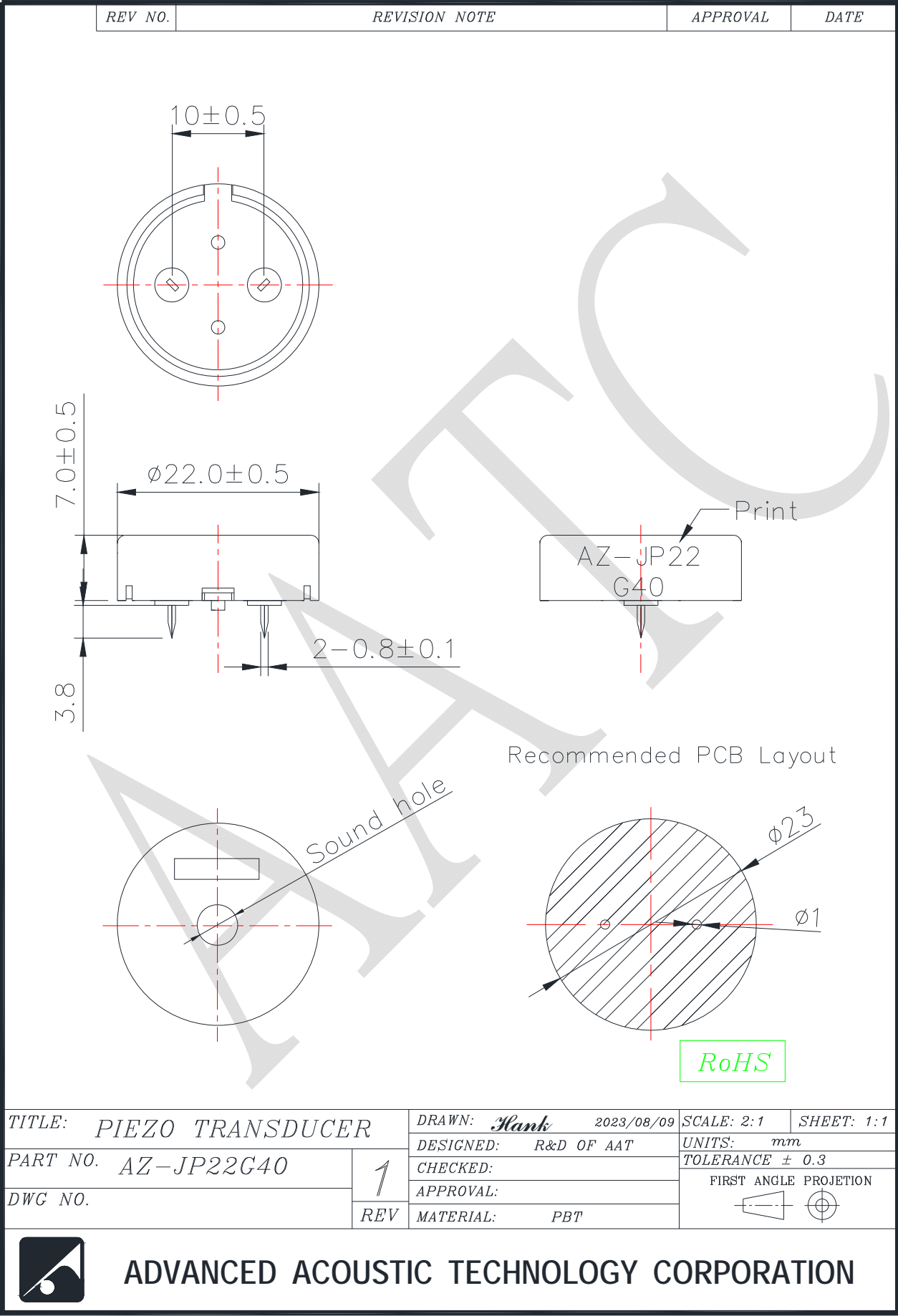


1. SPECIFICATION

AZ-JP22G40

| ITEM | | UNITS | SPECIFICATIONS | CONDITIONS |
|------|---|----------------|----------------|--|
| 01 | Rated Voltage | V | 12 |  <p>Square wave 1/2 duty.</p> |
| 02 | Operating Voltage | V | 1 ~ 30 | |
| 03 | Rated Frequency | Hz | 4000 | |
| 04 | Sound pressure level (Distance at 10cm) | dB(A) (Min) | 85 | Rated voltage, rated frequency. |
| 05 | Consumption Current | mA (Max) | 5 | |
| 06 | Capacitance | pF | 25000±30% | At 100Hz |
| 07 | Operating Temp. | °C | -20 ~ +70 | |
| 08 | Storage Temp. | °C | -30 ~ +80 | |
| 09 | Weight | g | 2.2 | |
| 10 | Housing Material | | PBT | |

3. DIMENSIONS



For more information, please contact AATC.

AATC