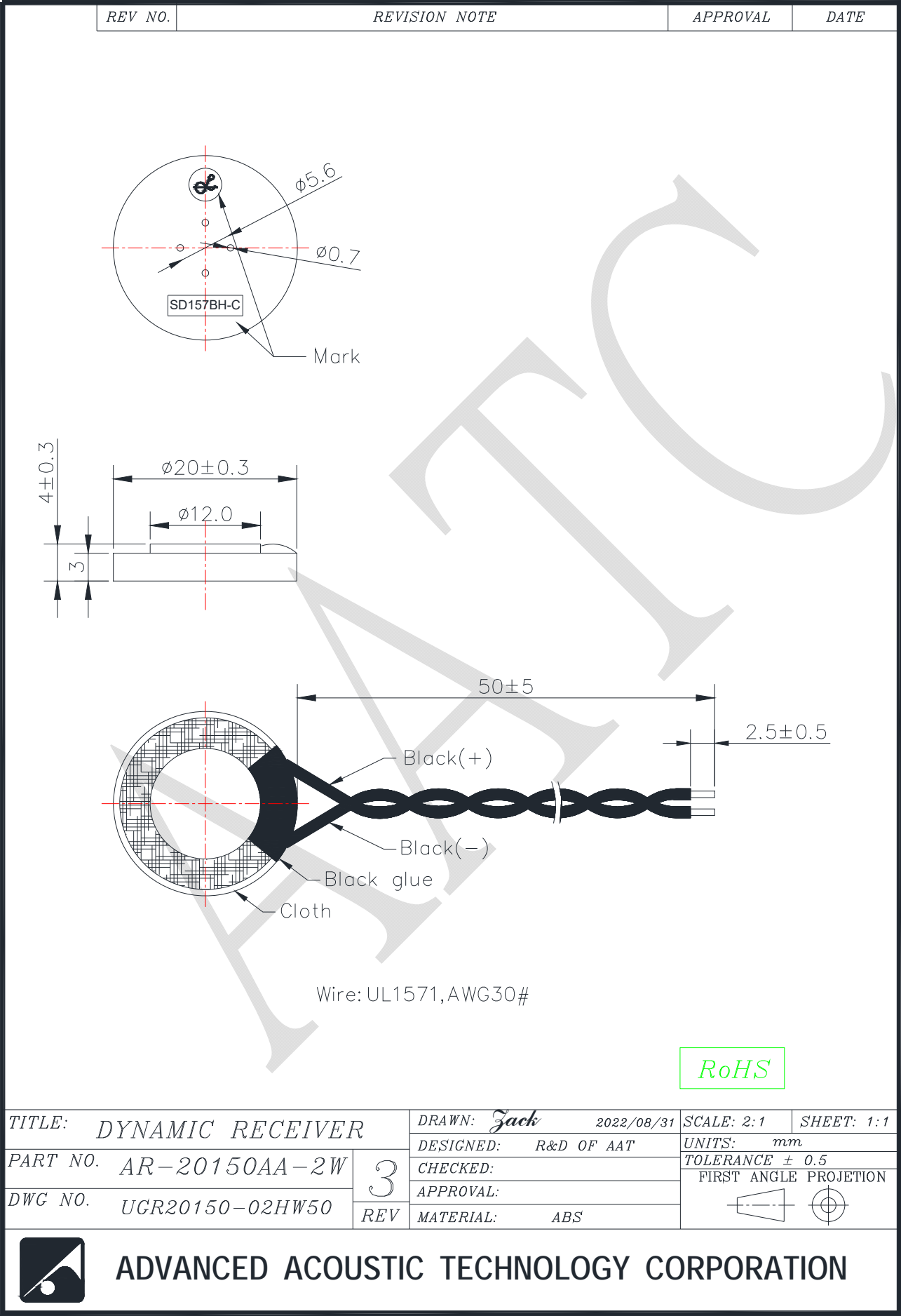


1. SPECIFICATION

AR-20150AA-2W

	ITEM	UNIT	SPECIFICATIONS		CONDITION
01	Dimension	mm	Φ 20		Refer to attached drawing in details.
02	Input power	mW	30		White noise is applied for 96 hours.
03	Max. Input power	mW	Max. 50		at room temperature for 60s on and 120s off for 10 cycles.
04	Impedance	Ω	$150 \pm 15\%$		at 1KHz /1V.
05	Sound pressure level	dB	92 ± 3		at 1KHz 100mV /1mW with IEC318 coupler.
06	Magnet Field Intensity.	dB A/m	Axial >=	- 19	at 1KHz 100mV /1mW with IEC318 coupler.
07	Frequency range	Hz	300~3.4K		
08	Total Harmonics Distortion	%	Max. 5		at 1KHz 100mV / Input power.
09	Operating temp.	°C	-20 ~ 55		
10	Storage temp.	°C	-30 ~ 65		
11	Weight	g	2.5 ± 0.5		
12	Buzze & Rattle	Hz	300~2K		Should not be audible at 100mV sine wave, Input power.

2. DIMENSIONS



For more information, please contact AATC.

AATC