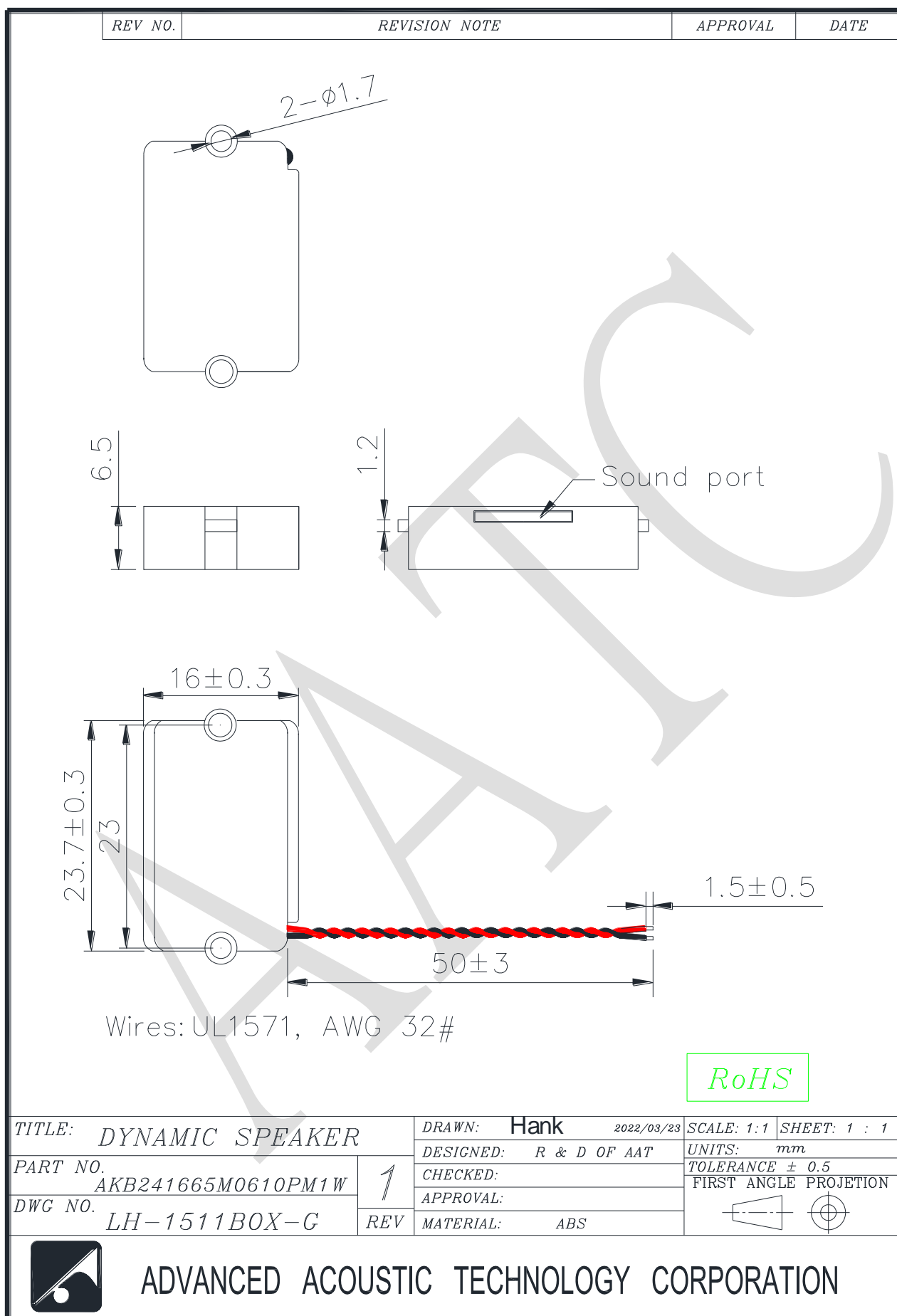


1. SPECIFICATION

AKB241665M0610PM1W

ITEM		SPECIFICATIONS	
01	Type	Dynamic Speaker	
02	Dimension	External diameter 23.7 x 16 mm	
03	Rated Input Power	1.0 W	
04	Max. Input Power	1.2 W for 1 minute	
05	Impedance	$6\Omega \pm 15\%$ at 1KHz 1V	
06	Resonance Frequency (Fo)	950 Hz \pm 20% at Fo, 1V	
07	Sound pressure level	86 dB(1.0W/0.1m) \pm 3 dB	at AVG 0.8, 1.0, 1.5, 2.0 KHz.
08	Frequency Range	Fo – 10 K Hz	
09	Total Harmonics Distortion	Max 10 % at 1 KHz, 0.1W.	
10	Magnet	Rare earth permanent (NdFeB) magnet	
11	Weight	2.4g \pm 0.1g	
12	Appearance	Should not exist any obstacle to be harmful to normal operation; damages, cracks, rusts and distortions, etc.	
13	Operation Test	Must be normal at program source 1.0W	
14	Buzz, Rattle, etc.	Should not be audible at 2.45V sine wave between Fo to 2KHz	
15	Polarity	When positive voltage is applied to the terminal marked (+), diaphragm should move to the front.	
16	Terminal Strength	Capable of withstand 1kg load for 15 seconds without resulting in any damage or rejection.	
17	Temperature	Operating temperature: -20°C to +60°C Storage temperature: -30°C to +70°C	



4. RELIABILITY TESTS